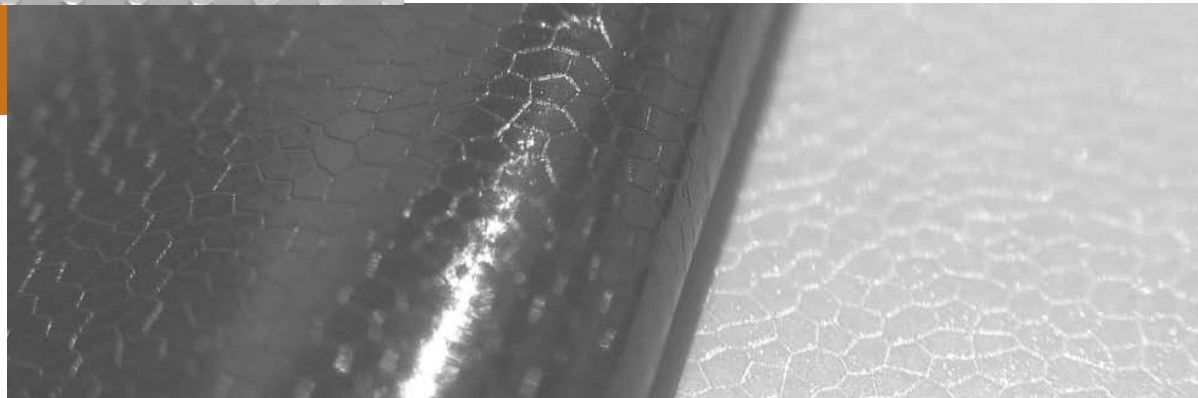
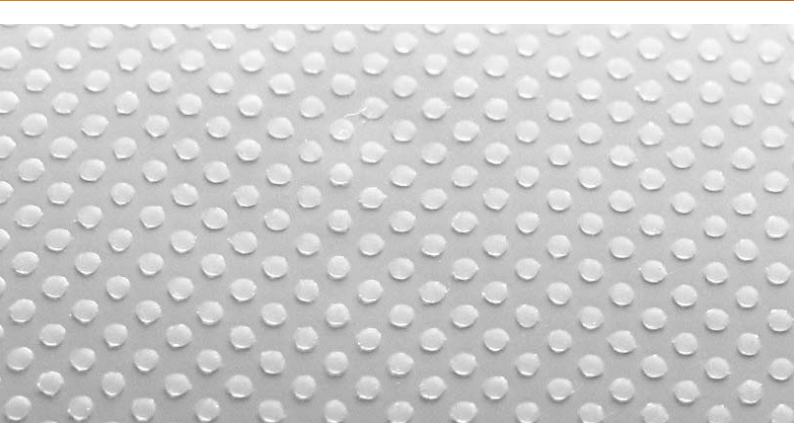




■ Graphics ■ Documents ■ Technical Coatings

Neschen Inkjet Solution Adhesive Solutions





Self-adhesive media – see the difference when you use it!

For protective and adhesive foils, as well as digital printing on self-adhesive media, the key to the perfect result is the combination of suitable media with the consistency and structure of an adhesive that's ideal for the application. At Neschen AG, we constantly strive to make top quality products, so that our customers can count on a consistently good and reproducible result when producing their final applications.

Neschen uses waterbased adhesive systems on acrylic base, being solvent free and non-aging. Listed media differ mainly in adhesive strengths, the adhesive's colour and the properties of the front film. Removable adhesives possess lower adhesion forces which pre-determine such media for short- or mid-term indoor applications, because they offer a better remove-ability. Dark grey adhesives allow the full covering of non-homogenous surfaces to prevent shine through.

We have listed below the products available for your customers' self-adhesive media applications from the extensive Neschen range.

Adhesives "made by Neschen":

easy dot

This waterbased adhesive on an acrylic base uses a dot pattern (dot coating) on the reverse of the printing material. This makes it easy to apply – even by hand. The adhesive dots keep in shape, which offers a residue-free removal from (nearly) every surface.

airglide

The unique feature of this kind of adhesive is the result of a specially structured release liner: It embosses the adhesive coating with fine channels allowing a bubble free application, because the air can disappear easily during application. Additionally the adhesive is coloured dark grey which covers non-homogenous surfaces best.

Our recommendation for solvent-based inks:

solvoprint easy 80 GP

80µm, special PVC, white, glossy, permanent adhesive, also printable with latex inks, fire classification M1

solvoprint easy 80 GP nolite

80µm, special PVC, white, glossy, permanent dark grey adhesive, also printable with latex inks, fire classification M1

solvoprint easy 80 MP

80µm, special PVC, white, matte, permanent adhesive, also printable with latex inks, fire classification M1

solvoprint easy 100 GP

100µm, special PVC, white, glossy, permanent adhesive, also printable with latex inks

solvoprint easy 80 GSP removable

80µm, special PVC, white, glossy, semi-permanent adhesive, easier to remove, also printable with latex inks

solvoprint easy 80 GSP nolite

80µm, special PVC, white, glossy, semi-permanent dark grey adhesive, easier to remove, also printable with latex inks

solvoprint easy dot 100 PE

100µm monoric PVC film with a glossy or matt surface, air channels due to the adhesive dot coating, PE liner (flatness performance), bubble free and simple in application, residue-free removable from most surfaces, inhouse use recommended

solvoprint performance 80

80µm PVC, polymer, glossy, white, permanent adhesive, printable with latex inks, fire classification M1

solvoprint performance 80 nolite

80µm, polymeric PVC, white, glossy, permanent dark grey adhesive, printable with latex inks

solvoprint performance clear 80

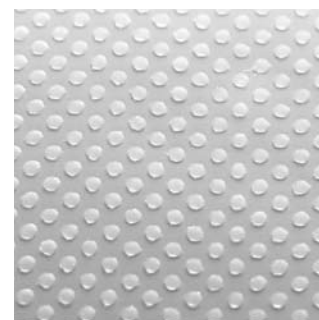
80µm, PVC, polymer, glossy, transparent, permanent adhesive, with thick PE release liner, printable with latex inks, fire classification M1

solvoprint performance airglide 80

80µm, polymeric PVC, white, glossy surface, special textured release liner, fine 'air channels' in the permanent dark grey adhesive, easy mounting, for outdoor signages and applications on cars on even and slightly curved applications

solvoprint performance backlit

80µm, PVC, polymer, white, silk glossy, translucent, permanent adhesive for backlit applications




Our recommendation for water-based inks:


printlux PVC glossy adh

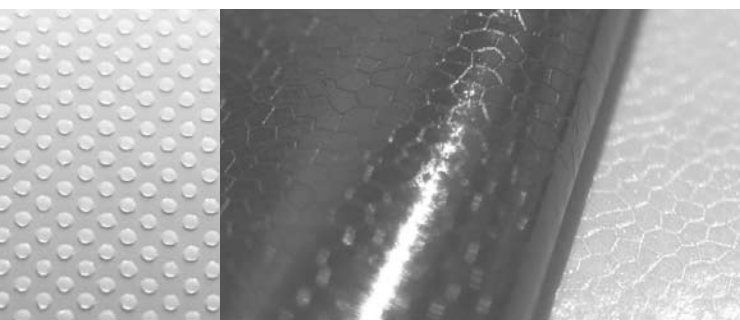
80µm, soft-PVC, white, monomeric, glossy, self-adhesive, photo-realistic print quality, for dye-based and pigmented inks, for indoor applications

printlux PVC matt CA adh

80 µm PVC film with matte Color Alliance (CA) inkjet coating for water-based inks, pigmented inks recommended, waterproof, no show-through of background colours due to the dark grey adhesive, for indoor and outdoor applications

	Permanent · transparent	Removable · transparent
Monomeric soft PVC	solvoprint easy 80 GP neutral	solvoprint easy 80 GSP rem. neutral
	solvoprint easy 80 MP neutral	solvoprint easy 80 MSP rem. neutral
	solvoprint easy 100 GP neutral	solvoprint easy 100 GSP rem. neutral
	solvoprint easy 100 MP neutral	solvoprint easy 100 MSP rem. neutral
	solvoprint easy 80 GP	solvoprint easy 80 GSP removable
	solvoprint easy 80 MP	
	solvoprint easy 100 GP	solvoprint easy dot 100 PE glossy
	printlux PVC glossy adh	solvoprint easy dot 100 PE matt
Polymeric		 <p>Photo: easy dot adhesive</p>
	solvoprint performance 80	
	solvoprint performance clear 80	
	solvoprint performance backlit	

	Permanent · grey	Removable · grey
Monomeric soft PVC	solvoprint easy 80 GP nolite neutral	solvoprint easy 80 GSP nolite neutral
	solvoprint easy 80 MP nolite neutral	solvoprint easy 80 MSP nolite neutral
	solvoprint easy 100 GP nolite neutral	solvoprint easy 100 GSP nolite neutral
	solvoprint easy 100 MP nolite neutral	solvoprint easy 100 MSP nolite neutral
	solvoprint easy 80 GP nolite	solvoprint easy 80 GSP nolite
	printlux PVC matt CA adh	
Polymeric		 <p>Photo: airglide - adhesive</p>
	solvoprint performance 80 nolite	
	solvoprint performance airglide 80	



Discuss your needs with us. We have the right media for you! Consult our office or field service staff by calling us on +49 (0) 5722 20 70, sending a fax to +49 (0) 5722 20 71 97 or contacting us via e-mail at neschen@neschen.de.

For more details visit www.neschen.com



For orders, sample requests, queries or suggestions please contact us:

Neschen AG
Hans-Neschen-Str. 1
D-31675 Bückeberg
Tel.: ++49 (0) 57 22-20 70
Fax: ++49 (0) 57 22-20 71 97
e-mail: neschen@neschen.de

www.neschen.com